

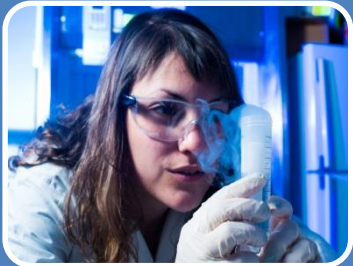


Ben-Gurion University of the Negev

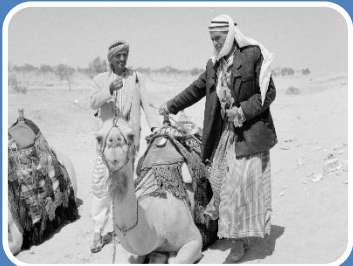




Teach



Research



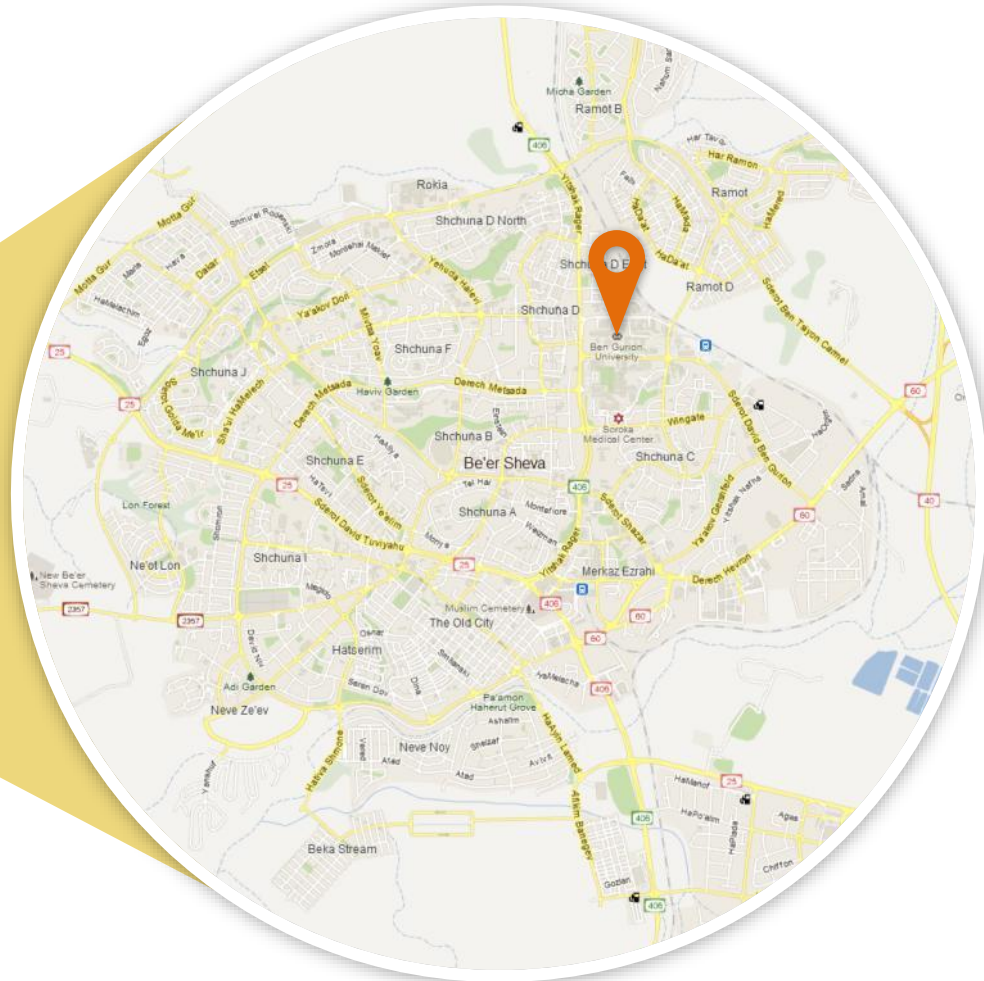
Develop the Negev



- Comprises **60%** of Israel's landmass
- Home to **9%** of its population
- Government priority to develop the Negev



Beer Sheva





- **Capital of the Negev region**
- **the modern city rests on the ancient town, associated in the bible with Abraham**
- **A young city (more than half its citizens are under the age of 40)**
- **Affordable living costs**
- **Planned growth of the metropolis to 1 million by 2020**

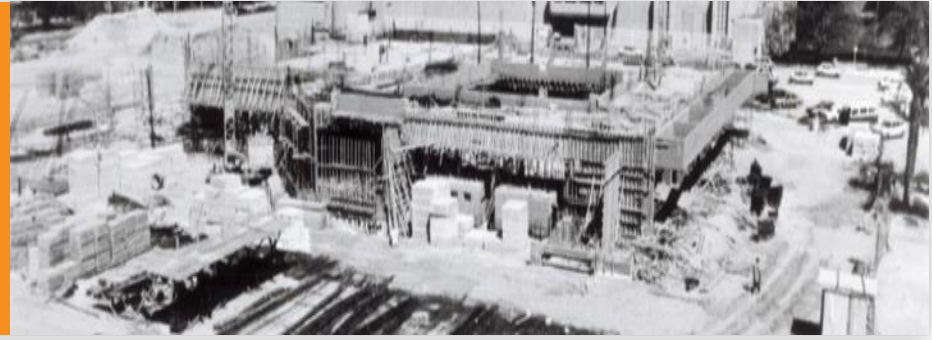






Founded in **1969**

Mandate to bring development to
Israel's southern region



Israel's fastest **growing**
and most dynamic university



Internationally recognized
Research Center





Students
from over

40

Countries



**~19,000
Students**

**~130,000
Alumni**



33%

of student body
in advanced
degree programs



3

Campuses:

- Beer Sheva
- Sde Boqer
- Eilat

Faculties



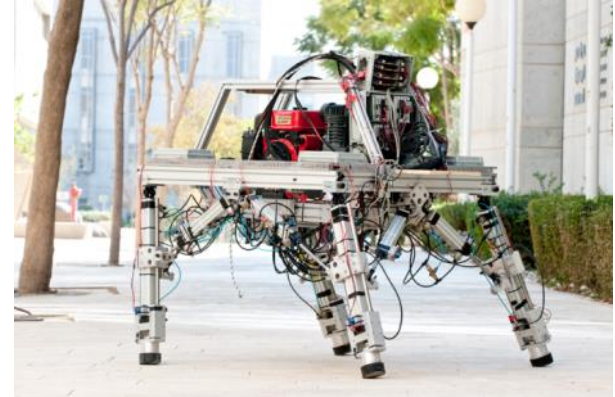
**Pinchas Sapir Faculty
of Humanities and
Social Sciences**



**Faculty of
Natural Sciences**



**Faculty of
Engineering Sciences**



**Faculty of
Health Sciences**



**Guilford Glazer
Faculty of Business
and Management**



**Jacob Blaustein
Institutes for
Desert Research**



Number 39
QS ranking of
Universities
under 50

Top 100
global
universities
for numbers
of US utility
patents

Number 39
among the
world's top
Technological
Universities



Over 6,000 students involved in a multitude of **community outreach** programs



#24 in Indonesian **GREEN CAMPUS** ranking out of 360 universities (2014)



Dedicated **Community Action Unit** to advance unique programs, including the Open Apartments





Engineering

Natural Sciences



Health Sciences

Social Sciences and
Humanities



Business
and Management

Desert Studies





MSc Chemistry

MSc Physics

MSc Life Sciences

MSc Mathematics

MSc Geological and Environmental
Sciences





**Jacob Blaustein
Institutes for
Desert Research**

MA, MSc in Desert Studies

- Agriculture & Biotechnology of Drylands
- Ecology of Drylands
- Solar Energy & Environmental Physics
- Irrigation & Plant Environment
- Environmental & Aquatic Microbiology
- Environmental Studies

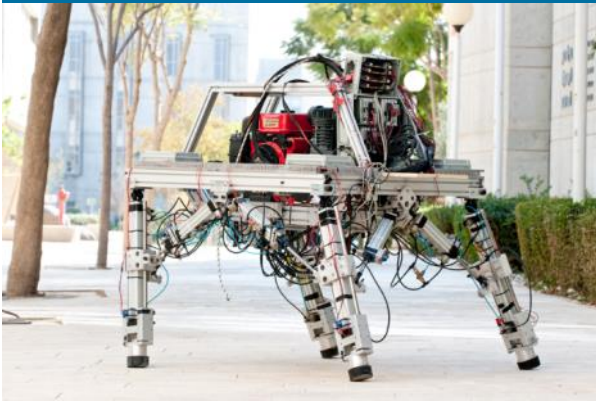
MSc in Hydrology & Water Quality

- Water Resources
- Desalination & Water Treatment
- Microbiology & Water quality





Faculty of
Engineering Sciences

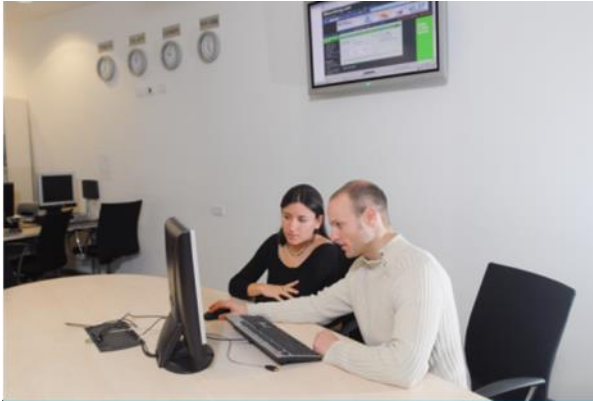


BGU
International

study@bgu.ac.il

MSc in:

- Biotechnology Engineering
- Biomedical Engineering
- Chemical Engineering
- Electrical & Computer Engineering
- Electro-optical Engineering
- Industrial Engineering & Management
- Material Engineering
- Mechanical Engineering
- Nuclear Engineering



**Guilford Glazer
Faculty of Business
and Management**

International MBA



**Faculty of
Health Sciences**

MD in International Health



**BGU
International**

study@bgu.ac.il



**Pinchas Sapir Faculty
of Humanities and
Social Sciences**



MA Linguistics

MA Literature

MA in Israel Studies



BGU
International

study@bgu.ac.il



➤ Semester/Year Programs

- Courses in a varied range of subjects

➤ Internship Programs (Full time)

- Academic internship 3-12 months

➤ International Summer Programs

- Global Health Program
- Data Mining & Business Intelligence for Cyber Security Applications
- Sustainable Agricultural Solutions (AKIS)
- Intensive Hebrew Course
- Internationale Sommeruniversität
(for German Speakers)



study@bgu.ac.il

Study in Israel



Contact us: study@bgu.ac.il

www.bgu.ac.il/global